



NAUTEEK
TACTICAL ELECTRONICS

SC100



Main characteristics:

Display

Display of the data concerning the boat's performances on a graphical LCD :

- 1 field of data, 40 mm max height.
- 2 fields of data, half size of the screen each.
- 2 fields of data 2/3-1/3, makes 25mm and 15 mm height.

Data to be displayed :

- Speedo : SOG in knots, 0,1 knot resolution.
- Compass : COG in °, 1° resolution.
- Synchronisable race timer and chrono.
- Position and misc information.
- Stats : Max speed, best 10 secondes run, navigated distance and time.



Nauteek is a brand of Imartec

Imartec SARL, 52 rue Diamant, Porte N°5, 40600 Biscarrosse, FRANCE

Tel: +33 (0)5 58 82 07 65 Fax: +33 (0)5 58 78 21 42

Email : info@nauteek.com, Web : www.nauteek.com

Recording

Standard 14 h recording capacity, one information per seconde.

Possibility to set the recording rate and to get up to 140 recording capacity.

Recording can be realised :

- on manual user order : the user can begin and stop manually the record.

- automatically, being synchronized with the race timer and the chrono.

This setting allows to record only the racing periods and also to get as many records as run races. When downloaded to a PC, the records will be also easier to read.

Firmware & Software

Data assembly and transfert using 'NAUTEKdownloader'.

Automatic detection of the SC100 via USB.

USB recorded data transfert @ 115,2 Kbps.

Data erase capacity from the system and also via the 'NAUTEKdownloader'

Possibility to load waypoints into the SC100 using the future 'NAUTEK manager'*

Bootloader : any user can update its system by downloading the new firmware available on our website and loading it into its SC100.

**future update before 02/2008*

Technical characteristics

Front face

polyester front face, coating against UV.

6 high sensitivity buttons user interface.

Transparent window, coating against sun reflection.

Display

Graphical LCD, 54x50 mm visible area.

Specific coating for a better contrast.

Leds back-light.

Memory

Internal Flash memory allowing up to 14 hours recording capacity.

NAUTEK file system organisation.

Settings

Capacity to choose the data to display on the screen.

Capacity to choose the height of the data to display on the screen : 40mm / 25mm / 20mm / 15mm.

Capacity to set the default value of the race timer : from 1 to 10 minutes.

Capacity to fix the value of the race timer at any moment.

Capacity to synchronize records and race timer.

Capacity to set the recording rate :

from 1 information recorded each 10 secondes up to 1 information per seconde.

Capacity to set the damping of the compass : from 1 to 10 secondes to erase the waves influence.

Capacity to set the damping of the speedo : from 1 to 10 secondes to erase the waves influence. 1 to 10 secondes.

Capacity to set the magnetic declination value to add it to the the compass information.

Capacity to display automatically a navigation screen SPEED/COMPASS at the end of the count down of the timer.

Capacity to set this preferred screen to use for automatical display at the end of the count down of the timer.

Connector

6 points IP67 male connector

extra weather cap against sand and dust

GPS engine

Ultra sharp new generation, 12 channels

Integrated antenna - Low consumption : 94 mW - Quick start

High sensitivity : 152 dBm.

Updated data each seconde.

0,1 knots SOG resolution - 1° COG resolution.

Supply

Integrated high capacitance, high reliability high safe Li-ion battery.

High speed and secure recharge with the power adapter 5V ; 1,2 A. (Battery is 100 % recharged in less than 3 hours).

Mechanical and weather resistance characteristics

Tesetd waterproof ABS enclosure.

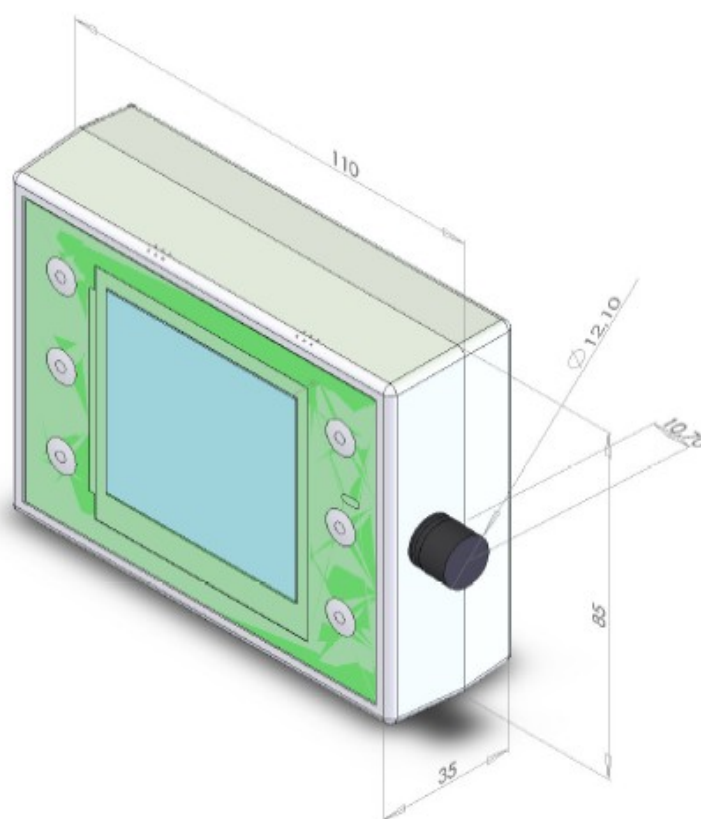
Tiny package (without connector) : 110 mm x 85 mm x 35 mm.

Extra light : 210g.

Operating temperature range : - 20°C to +60°C.

Battery recharging temperature range : 0°C to 40°C.

Fixing : with dual lock 3M scrtach on any flat surface, mast bracket and cat pole.



Accessories included with each SC100

1 protection travel bag.

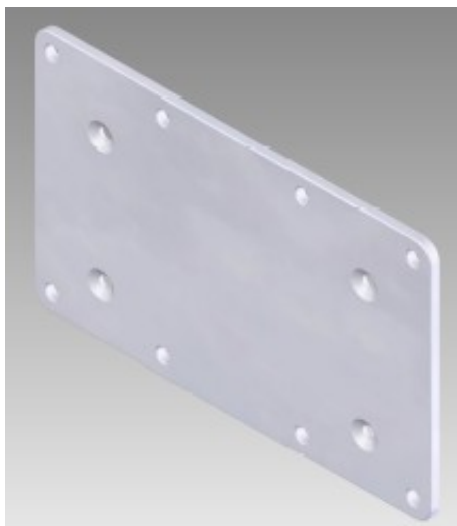
1 power adapter 5V 1,2 A , euro input plug 220 VAC, specific output connector to fit with SC100.

1 USB cable + 1 installation software to transfer the recorded data to a PC.

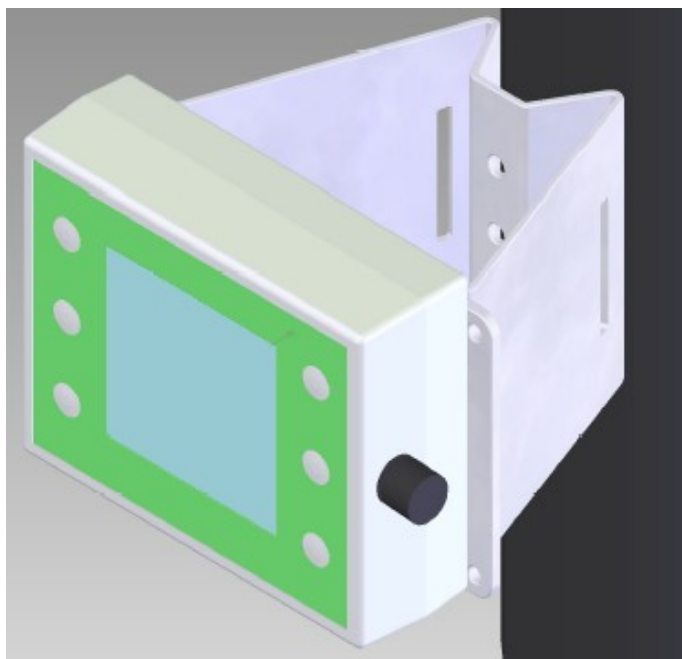
2 extra pieces of 3M dual lock scratch to fix the system to any flat surfaces...

Extra accessories, delivered upon request.

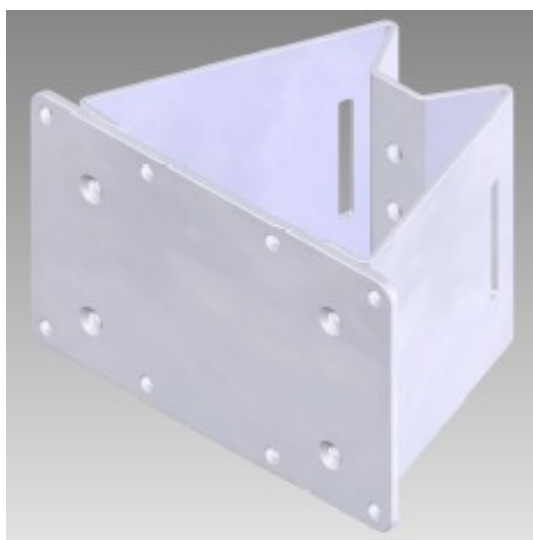
1 flat bracket



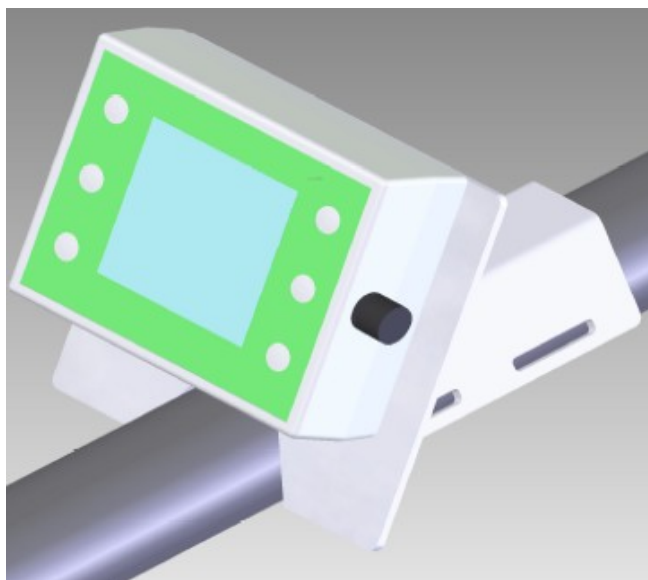
SC100 fixed on its mast bracket



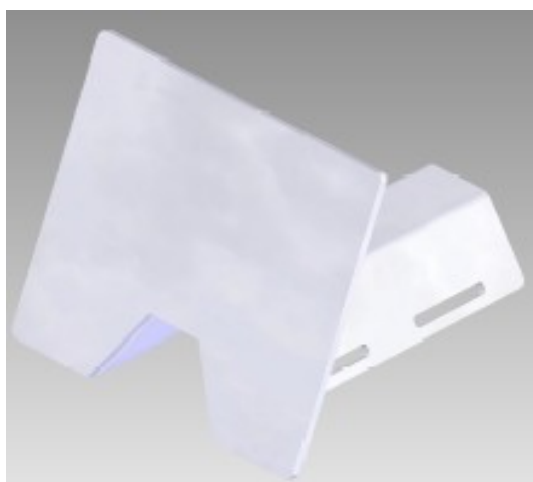
1 mast bracket for keelboats and sportboats



SC100 fixed on its cat pole bracket

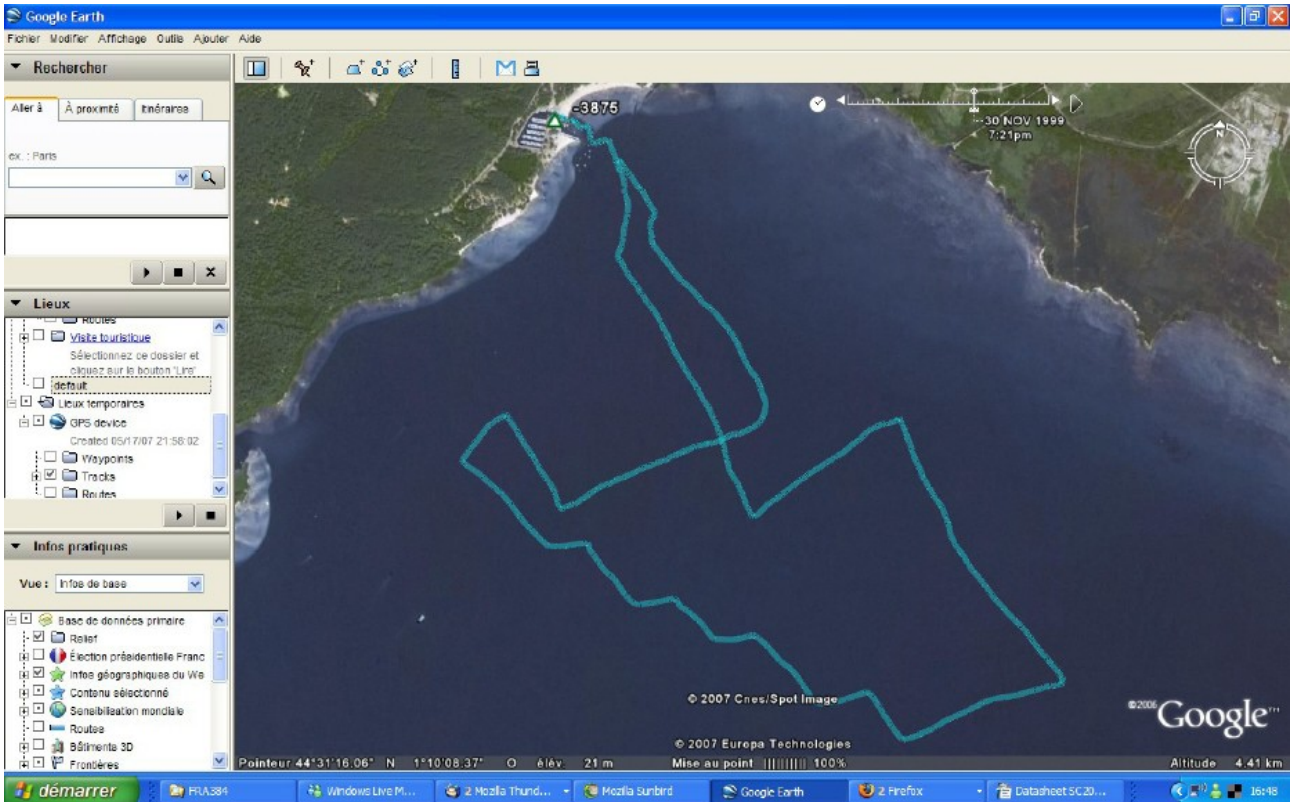


1 cat pole bracket for sport catamarans



Samples of files recorded by a SC100 and downloaded from the memory of the SC100 to a PC

sample of file, GoogleEarth interface



Sample of file, free GPS Action Replay interface

